



RESTORE & RIDE MAGAZINE

March - April 2025

Coffs Harbour & District Motorcycle Restorers Club Inc.

Safe riding throughout the year.



**All Correspondence to: - The Secretary, CH&DMRC,
Jetty PO Box 4248,
Coffs Harbour, NSW, 2450.**

Email - coffs.motorcycle.restorers@gmail.com

Club Office Bearers 2024-2025

PRESIDENT	Nigel Locke	0411-210-616
VICE-PRESIDENT	Peter Watson	0404-263-668
SECRETARY	Trish Herreman	0407-398-131
TREASURER	Glenn O'Grady	0427-271-854
CLUB CAPTAIN	Gary Mackay	0407-246-775
VICE CAPTAINS	Roy Atherton	0428-218-613
	Kerry Hendy	0403-084-560
WEBSITE ADMIN	Wayne Adams	0400-002-105
MEMBERSHIP OFFICER	Eddie Oremek	0427-578-027
PUBLIC OFFICER	Trish Herreman	0407-398-131
REGISTRAR	Ian Corner	0407-748-215
LIBRARIAN	Edward Oremek	0427-578-027
PROPERTY OFFICER	Rob Popplewell	02 6653-4532
MAGAZINE EDITOR	Lara Bechaz	0413-582-384
MAGAZINE DISTRIBUTION	Rob Popplewell	02 6653-4532
FACEBOOK ADMIN.	Lara Bechaz	0413-582-384
MACHINE EXAMINERS	Kevin Barber	02 6658-4535 (Coffs Hbr)
	Roy Atherton	0428-218-613 (Coffs Hbr)
	Chris Pearson	0429-667-048 (Nambucca)
	Nigel Locke	0411-210-616 (Urunga)
	Ennio Bardella	0427-291-950 (Coffs Hbr)
	Jim Stevens	0401-936-446 (Woolgoolga)
	Peter Watson	0404-263-668 (Coffs Hbr)
	Shane Barns	0401-769-314 (Macksville)
	Adam Johnson	0400-429-417 (Sandy Beach)
	Mark Herfoss	0418-865-167 (Bonville)

CLUB CONTACT DETAILS:

Postal: P.O. Box 4248, Coffs Harbour Jetty, 2450
Web: <http://www.coffsharbourmotorcyclerestorers.com/index.html>
Email: coffs.motorcycle.restorers@gmail.com
Editor: editor.coffs.motorcycle.restorers@gmail.com
Facebook: Coffs Harbour & District Motorcycle Restorers Club

CLUB MEETINGS:

3rd Thursday of each month, 7.00pm at Sawtell RSL, Sawtell.
Come early for a meal at the bistro.

LIFE MEMBERS:

Don Sonter, John Budds*, Norman Thearle*, Fred Spinks*, Pete Richmond, Bill Baker*,
Ned O'Brien, Rob Popplewell, Jeff McKenzie, Kevin Barber, Lance Gilbert,
Grahame Maddeford and Rob Major. *Deceased

THE 41st RESTORE & RIDE RALLY

The Coffs Harbour and District Motorcycle Restorers' Club

“The Coast to the Tablelands”

23rd to 25th May 2025, (Rides and activities from Tuesday, 20th)



This year's rally raffle bike is this well sorted 2020 RE Himalayan

Attached is a full copy of the Rally Programme with Entry Form

Members can enter the Rally and this provides them with all the benefits and services of the rally including the right to have their bike judged for the “Van Bladen Best Club Bike Plaque”. Just complete the entry form

Alternately members can volunteer as cooks, marshals, back up trailer drivers and for other tasks. To volunteer, contact:

The Rally Secretary, Trish Herraman, (0407398 131),

The Club Captain, Gary McKay, (0407 246 775)

The Head Marshal, Peter Herraman (0417 722 672)

The Ride Co-ordinator, Nick Hiller, (0427 280 354)

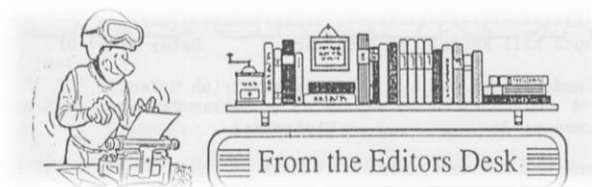
Don't forget to put the dates in your diary and contact Trish or see Gary to buy tickets for this year's rally bike raffle.

Hi Members.

It is our Rally time again in May. Try and get behind this event and fill in an entry form.

Plenty of information is out there, the entry

form is in the Magazine. There are some Rally Rides added to Aprils Ride Calendar.



Some members are still unsure about the Log Book. I have listed some Key Points that I gathered from the Services NSW website and attached these forms to the Magazine. If you were to have an accident or someone was pulled over by the police and you didn't have a logbook entry when you should have you will find that you will not be covered. Please read and understand them. We wouldn't want anyone to say they didn't know.

1. No log book entry is needed for Club Organized events, but you must record return journeys in your log book that are not part of club-organised events.

Does that mean? If there is no return route listed on the ride calendar then a log book entry is needed? Well, if so, all rides will now have a return route listed.

2. You need to fill in the log book for Maintenance and personal use. Riding to a machine examiner for a registration check needs a log book entry, it is classed as maintenance.
3. This is interesting. You cannot use your 60 days of log book all in one hit at the end of the year.

Days allocated and registration length.

Remaining registration	Number of days vehicle can be used (allocated log book days)
Up to 3 months	15
Over 3 and up to 6 months	30
Over 6 and up to 9 months	45
over 9 months	60

4. When riding a club vehicle, the Log book, certificate of approval operations, registration papers and your club Registration Card must be carried on the vehicle at all times.

Cheers

Lara.

Please send your info to editor.coffs.motorcycle.restorers@gmail.com

CLUB INFORMATION

CLUB MEETINGS

To be held at the Sawtell RSL. 7.00pm on the third Thursday of every month.

Join in for a meal at the Bistro before the meeting.

CLUB REGALIA (In both men's and women's cuts)

Hoodies	\$38	Black with Zippered front, need to pre-order
Sloppy Joes	\$35	Available in L, 2XL and 4XL sizes
T-Shirts	\$25	In red or black No XL in black
Polo Shirts	\$34	New and old stock in a variety of designs and sizes.
Base-ball Caps	\$10	
Number Plate Attachments	\$6.	'Coffs Harbour'

Ring Una Carpenter or Mick on 0438564632 for your orders or go to a fitting at any club meeting at the Sawtell RSL Club. All items are returnable if they don't fit!

WEBSITE Coffs Harbour and District Motorcycle Restores Club.

<http://coffsharbourmotorcyclerestorers.com/>

FACEBOOK Coffs Harbour & District Motorcycle Restorers Club

MAGAZINE Advertisements, Ride Calendar and Stories for the Magazine.

If members want advertisements or have stories to send in, especially ones with photos, please get them to the editor, editor.coffs.motorcycle.restorers@gmail.com at least a fortnight before the end of the month when a magazine is due. Any offers of morning teas or suggestions for the "Ride Calendar" need to be in early.

CLUB RIDES See the ride Calendar in the Magazine for upcoming rides, Rally's & Events.

LOGBOOK You must always carry your Logbook and Membership Card when riding/driving your club bike/car.

Your logbook does not need to be filled out when you are going on a club calendar ride. But you need to follow that route listed on the ride calendar leaving from your home address and returning in the direction of your home address and make sure your bike has been registered for the day by one of our Captains.

When to fill in your Logbook. You must record return journeys that are not part of club-organised events and each day of maintenance and personal use in the logbook.

CLUB RALLY Our Club Rally is held Annually in late May.

Membership renewal.

The end of the club's financial year is 30th June. Your membership expired on that date. This means you cannot ride a conditionally registered bike after the 30th June unless you have paid your membership subscription.

As far as the RMS is concerned, if the owner of the vehicle is not financial with his club, then the bike is unregistered, irrespective of when the bike's registration runs out



MEMBERS SECTION

Members are required to attend at least three events during a membership year and can be by way of attending a Club meeting, ride days, the rally, Club Christmas party or Membership BBQ Day.

Members are required to abide by the Club's Constitution, refer to the Club website.

The Club will hold an annual BBQ at a venue for members to attend from 9.00am to 3.00pm on the third Sunday in June. This is a casual get together to have a chat, pay your membership for the following year prior to the due date of 1 July.

Our members try to attend our meetings on a regular basis, and it is hoped that you will be able to do so as well to maximise your enjoyment and fun as being a member of our Club. Your involvement and contribution are essential for the Club's continued success.

Memberships are due on the 1st July of each year
Payments can be made by direct deposit:
Coffs Harbour & District Motorcycle Restorers Club Inc
BCU – BSB: 533000 ACC: 32810918

PLEASE USE YOUR MEMBERSHIP NUMBER AS PAYMENT REFERENCE

If paying in cash, please put the correct money in an envelope with your name and membership number on the front of the envelope. Hand deliver to the Treasurer.

PLEASE DO NOT POST CASH!

If membership payments are not received by the **30th September** of each year, you will need to complete a new member application and begin the process from the start which also attracts a Club Application fee of \$20.00 in additional to your annual membership of \$50.00.

If you are unsure if you are a financial member, please contact the Membership Officer.



Log Book

Who is eligible to use a log book

Getting a log book allows you to use vehicles registered under the Historic Vehicle and Classic Vehicle Schemes for up to 60 days per year for maintenance and personal use, outside of club-organised events. Each day of general use must be recorded in your log book.



You may only opt in for a Classic and Historic Vehicle Log Book if:

- you are a recognised club member with NSW conditional registration.
- your club participates in the log book scheme.

Check the [Historic vehicle clubs list \(PDF 857.58KB\)](#) or the eligibility requirements for the [classic vehicle scheme](#) for participating clubs.

You can view the [Historic and classic vehicles log book and club runs fact sheet \(PDF 119.96KB\)](#) for more information about using the log book.

Using the log book

You can use the log book as soon as it's issued to record the days you use the vehicle for maintenance or personal use.

The number of days allocated depends on the remaining length of conditional registration when the log book is issued.

Days allocated and registration length.

Remaining registration	Number of days vehicle can be used (allocated log book days)
Up to 3 months	15
Over 3 and up to 6 months	30
Over 6 and up to 9 months	45
over 9 months	60

You must carry the log book in the vehicle when it is in use.

When to notify the club of vehicle use

If you're using a log book, you don't need to tell the club which days you are driving the vehicle for personal use or maintenance – unless you have an agreement with the club to notify them.

However, you must record return journeys that are not part of club-organised events and each day of general use in the log book.

Why do I need a log book?

A log book allows you to use vehicles registered under the Historic and Classic Vehicle Schemes for up to 60 days per year for maintenance and personal use (general use), outside of club-organised events.

Each day of general use must be recorded in the log book.

Who must fill in the log book?

A person responsible for the vehicle can fill in the log book. Only one log book entry is required per day, even if there are multiple drivers.

The daily entry expires at midnight on the day of the log book entry.

The person making the entry in the log book must write their full name and signature each time.

What if I get a log book part way through the existing registration year?

Days of general use are calculated pro rata based on remaining registration as per below:

Remaining registration	Number of days
Up to 3 months	15
Over 3 and up to 6 months	30
Over 6 and up to 9 months	45
Over 9 months	60

- This same calculation is applicable if a replacement log book has to be issued.
- You can use the number of days you are eligible for at your discretion throughout the registration period.
- This table is not relevant when you have a full year of registration and have opted in to the log book scheme.

When do I need to carry the log book?

The log book must be carried in the vehicle at all times when the vehicle is being used. If you are towing trailers or caravans that are registered under the Historic Scheme, separate log books are required and also must be completed and carried.

When do I need to carry the Certificate of Approved Operations?

The certificate is issued to all vehicles registered under the Historic and Classic Vehicle Schemes. It must be carried in the vehicle whenever it is in use, including when using the log book and during club organised events. As with the log book, the certificate of approved operations for trailers or caravans that are registered under the Historic Vehicle Scheme must also be carried.

Do I need to fill in the log book when driving interstate?

Yes, the rules applying to log books and club event use still apply when driving interstate. When interstate, the NSW rules must be followed.

Can I go on a long trip (multi day)?

Yes, provided that each driving day is recorded in the log book. For days when the vehicle is parked up (not driven) a log book entry is not required.

What happens if I use up all of my log book days?

If you use all of your log book days within any given year of registration, you will be limited to club runs only. When you renew your historic or classic registration, another log book will be issued and you will have another 60 days of personal use for the new 12 month period.

Historic and classic vehicle log book and club run scenario

A club run is an event that is publicised in advance, and then recorded by the club's secretary in the club's official diary or meeting minutes. It can include travel from the member's home to the event starting location and return.

Scenario: A club run is planned to go from the members' homes to a park in Merrylands, a central meeting place for all club members. From there, the club members will drive to Wollongong lighthouse and back again. No log book or log book entry is required for this club run provided it is declared to be an official club event. However, if a member decides to leave the club run and travel to Kiama before returning home, a log book entry would be required. For non-log book clubs and members, this deviation would not be permitted.

How do I opt in for a historic and classic vehicle log book?

For historic registration you must be a member of a club listed on the Transport for NSW list of recognised historic clubs, and for classic registration you must belong to a club affiliated with one of the four approved organisations.

To opt in you need to attend a Service NSW service centre and provide:

- proof of identity such as a NSW driver licence
- current Certificate of Conditional Registration (if available)
- current Certificate of Approved Operations (if available)
- and complete a change of record form.

You can opt in at any time and there is no additional cost.

What if a club has not opted in for the historic vehicle log book scheme?

Clubs and their members that have not opted in for the log book scheme can only use their vehicles for club runs and maintenance trips. If a club opts out of the scheme, the club members are then also limited to club and maintenance runs only.

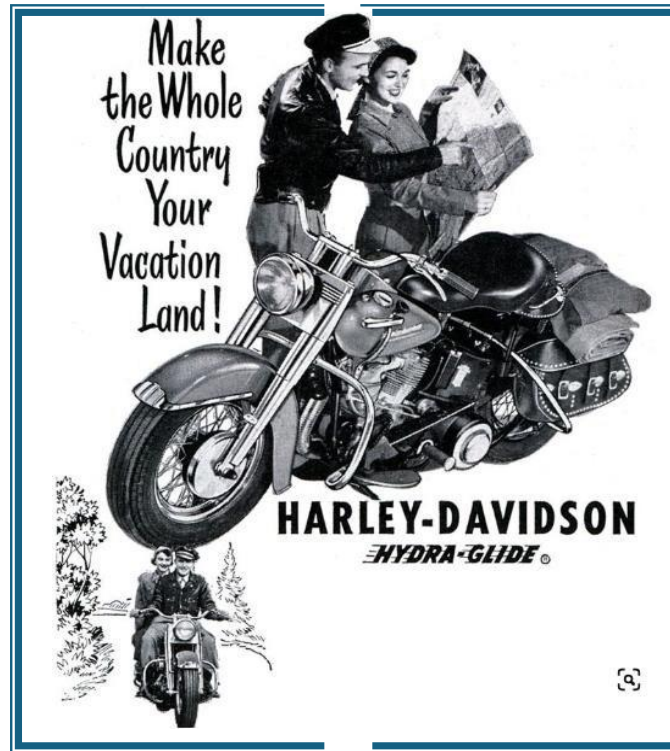
Alternatively, historic vehicle owners can join another club that is participating in the log book scheme. Participating clubs may also have club rules or bylaws relating to the use of vehicles within their club.

Stay informed and sign up to DRIVE and DRIVE Lite – Historic and Classic, our industry newsletters for road safety, regulation, and historic and classic vehicle specific news and updates. Visit <http://bit.ly/3ibEnyn> or scan the QR code:



THE 41st RESTORE & RIDE RALLY

The Coffs Harbour and District Motorcycle Restorers' Club



Long and Short rides for all makes and types of motorcycle.

“The Coast to the Tablelands”

You are invited to

41st “Restore and Ride” Rally, for motorcycles, 30 years or older,

23rd to 25th May 2025, (Rides and activities from Tuesday, 20th)

at Big 4 Sawtell Holiday Park

Accommodation



Contact the Big 4 Sawtell Holiday Park on 6648-4485 to book in for the rally. There will be guided rides from Tuesday, 20th May with the main rally from Friday 23rd May to Sunday 25th May 2025. Please let the Caravan Park staff know that you are part of the Coffs Harbour Motorcycle Restorers rally. If you book for seven days, then the seventh day is free.

The Big 4 Sawtell Holiday Park is a spacious caravan park located at 5 Lyons Road, Sawtell, with clubs, cafes and shops all within easy walking distance and only 8kms south of Coffs Harbour. The park's accommodation ranges from villas and cabins to van sites and shaded camping areas adjacent to Bonville Creek, with nature on your doorstep and with a short walk to the beach.

Click on website for a photo gallery and an overview of the venue:

<https://www.coffscoastholidayparks.com.au/big4-sawtell-beach/>

General Rally Information

Fuel:

- The nearest fuel is at Vignes Independent Service Station at 28 Sawtell Road (on the corner of Barber Close) on the way to Coffs Harbour.
- To the South, the nearest fuel is at the Liberty Service Station, 6kms away on Pine Creek Way.
- All rides will pass a service station within 6 kms of the Big 4 Sawtell Caravan Park.

Extra bike (s) - You can bring as many as you like, but each one must be recorded on your entry form to qualify for our rally insurance. If the second (or 3rd) bike will be ridden by a rider other than yourself, a fully paid entry in the name of the rider(s) must be submitted.

Extra rally badges - These will only be available if there are badges left over after all entrants have received one. If you want one, enquire at check - in to register your request. They will be \$6 each if available.

Raffles

There will be two types of raffles held during the rally and club week. The “big raffle” will be for a 2020 Royal Enfield Himalayan (actual bike pictured) with only 15K on the clock. The fully equipped motorcycle has been cleaned, serviced and only needs registration to be out on the road. The tickets for the motorcycle are \$10 each and will be available on the rally entry or at various locations during the rally. The second prize, kindly donated by North Coast V-Twins, is a “Harley for the Day”. The motorcycle raffle will be drawn at the Saturday night rally dinner. Last year, the raffle raised \$5000 which was donated to the Westpac Helicopter Service.



There will also be a more traditional rally raffle with tickets sold for \$1/each and the raffle will be drawn from a tombola at the Saturday night rally dinner and the lucky winners will be able to select their prize from the donated sponsors' table.

Rally Routes and Programme

On Tuesday, Wednesday and Thursday, rally entrants will join Coffs Harbour members on their regular “Ride Calendar” events with some additional destinations and activities. Then on Friday, Saturday and Sunday there have been rides expressly designed for the Rally.

Tuesday, 20th May, Morning tea will be held at North Beach with entrants leaving Sawtell Caravan Park at 8.30am to ride to Mylestom to join the Coffs Harbour members for their regular Tuesday morning tea. After morning tea, at approximately 11.00am, there will be a guided ride to Macksville via Giinigay Way for entrants and club members, then onto Scotts Head for lunch at the Scotts Head Bowling Club.

Wednesday, 21st May, A “Riders’ ride” designed for those who don’t mind putting in a **BIG** day (@400kms) in the saddle. The “Waterfall Tour” takes entrants to the New England Tablelands via the waterfalls along Waterfall Way. Club members and rally entrants will leave Sawtell Caravan Park at 8.00am. After passing two waterfalls on the climb to Dorrigo, it will be onto Fuss Pots at Ebor (at 105kms) for morning tea at

@10.00am. Then the ride heads West, firstly to Ebor Falls then onto Wollomombi Falls, 2nd highest in NSW (at the 150kms). Then back onto the road and West to Armidale for lunch at the St Kilda Hotel in Marsh Street (at the 200km mark). After lunch, the ride will head out along Rockvale Road (about 4 kms of good quality gravel road) towards the Guyra Road at Aberfoyle, before heading back through Ebor (at 284kms mark) and then down from the Tablelands and back to Sawtell. (total of 390kms)

Or if the weather is foul

Then the ride will head North to Guyra (at 230km mark) and then return to Ebor (at 310km mark) via the Guyra Road before returning to Sawtell (total of 420kms) This avoids the 4kms of gravel road.

Thursday, 22nd May,

Thursday is Rally “Sports Day” and another big day with 250kms of riding fun. Entrants will leave Sawtell Caravan Park at 9.30am for a guided ride via East Bank Road to the Idle Inn for coffee(40km) after which entrants will ride to Brushgrove pub for lunch (70km from Idle Inn arriving @ midday) via Orara Way, then Big River Way. Then across the Lawrence Ferry and back to the Grafton Clay Target Shooting Club (40kms) arriving at @1.30pm. Participants will be required to complete a P650 Form at the venue and will have the opportunity to demonstrate their prowess with ten shots at the clay pigeons. Tea and scones will be provided and after about an hour and a half, return to Sawtell via Orara Way (100kms).

Link to P650 Form (For your information, complete on the day at the venue)

(https://www.police.nsw.gov.au/data/assets/pdf_file/0006/805290/P650_Declaration_Application_Form.pdf)

At @6.00pm, there will be a social night at the Sawtell Bowling Club adjacent to the Caravan Park to discuss the shooting prowess demonstrated during the day and if desired, dinner can be purchased.

Friday, 23rd May, Rally participants and club members will gather at the Sawtell Caravan Park camp kitchen at 10.00am for a light morning tea and a briefing for the Poker Run. Entry cards for the Poker Run can be purchased on the entry form or on the morning before the run. The first playing card will be handed out at 11.00am at the morning briefing and will be marked with the participant's entry number. At 11.30am, the marshalled ride will leave Sawtell for Urunga Coach Station, where there will be a short stop, and a second card marked with the entry number. From Urunga, the ride will go to Bowraville via Wirrimbi Road and Rodeo Road where the marshals will provide the third card at the Nambucca River Reserve. Then head onto Macksville via Wilson Road and out via



Warrell Creek and down the Highway to Stuarts Point Road and onto Stuarts Point, where there will be a sausage sizzle and a fourth card. The ride will then head back to Sawtell Caravan Park via Scotts Head Road and Giinagay Way.

At 6.00pm, the traditional free “Welcome” Barbeque will commence, and the final card will be handed out and the winning hand declared.

The winner of the Poker Draw will be decided according to the posted criteria and will receive their prize.

Saturday, 24th May Breakfast will commence at 7.00am in the camp kitchen.

Long Ride (260kms): At 8.15am, there will be a briefing and at 8.30am the ride will leave Sawtell Caravan Park and follow the “Old Pacific Highway” to Raleigh before turning off to Bellingen and on up the Mountain to Dorrigo for a light morning tea at the Dorrigo Showground, (60kms) then via Waterfall Way to Dutton Trout Hatchery 6775 9139 for a tour of the Rainbow and Brown Trout breeding facility.(60kms). There is 3kms of good gravel road. The hatchery staff will provide us with a tour and maybe some hands on training!

The Long Ride will then go back down Waterfall Way and onto the Armidale Road to Dundurrabin Community for lunch (50kms) and the judging of bikes Then return with the Short Ride to Sawtell (95kms)

Short Ride (180kms): At 10.00am, this ride will leave Sawtell and follow the “Old Pacific Highway” to Raleigh before turning off to Bellingen and on up the Mountain to Dorrigo for a light morning tea in the Luncheon Hall at Dorrigo Showground(60kms). After morning tea, the Short Ride will leave Dorrigo and go via Tyringham Road and Armidale Road to Dundurrabin Community Hall (30kms) for lunch and bike judging.

Both rides will return to Sawtell via Tyringham Road, Waterfall Way and Pine Creek Way (95kms)

The presentation dinner, raffles and entertainment will be at the Sawtell RSL within walking distance of the Sawtell Caravan Park. Doors open at 6.00pm and be sure to bring your meal tickets, and if you have any special dietary requirements please advise when you return your entry form.

Sunday, 25th May. Breakfast will commence at 7.00am and go for about an hour. After breakfast the ride will leave at 9.00am and go North to Bruxner Park and then via Bucca Road and the Orara Valley Way to Glenreagh where the Glenreagh Rural Fire Service will provide a complimentary “Sunday Sausage”.

THE COFFS HARBOUR & DISTRICT MOTORCYCLE
RESTORERS CLUB 40th Rally, 21st – 26th May, 2024.

Office use only

Entrant No:

Entries close 12th May. Entries received *after* this date cannot be guaranteed meals or a badge. Each entrant MUST complete the entry form below in *full and sign it*

Entrant's Full Name					
Pillion/Partner Name					
Postal Address					
		State		Post Code	
Email				Licence number	
Telephone			Your club		
1: Make		Model		Year	
Capacity		Solo or Outfit (circle)		Registration Plate No	
2: Make		Model		Year	
Capacity		Solo or Outfit (circle)		Registration Plate No	

Meals and other items We need to know numbers.

Item	Unit Cost	Number	Total Cost
Entry (covers one entry badge)	\$35	1	\$35
Tuesday Lunch at Scotts Head PLEASE INDICATE NUMBERS	At own cost		\$0
Wednesday Lunch at Armidale PLEASE INDICATE NUMBERS	At own cost		\$0
Thursday Brunch (@10.00am) at Idle Inn PLEASE INDICATE NUMBERS	At own cost		\$0
Thursday Lunch (@12.00am) at Brushgrove Pub PLEASE INDICATE NUMBERS	At own cost		\$0
Thursday Clay Pigeon Shooting. PLEASE INDICATE NUMBERS	\$15/person		

Friday Light Morning Tea (@ 11.00am) PLEASE INDICATE NUMBERS	\$5/person		
Friday Poker Run (1 hand/entry) and free sausage sambo lunch at Stuart's Point (@ 1.30pm) PLEASE INDICATE NUMBERS If desired order more poker entry cards here	\$5		
Friday night Free Welcome BBQ PLEASE INDICATE NUMBERS	\$0		\$0
Saturday Breakfast PLEASE INDICATE NUMBERS	\$5/person		
Saturday Light morning tea at Dorrigo Showground for both Short and Long Ride PLEASE INDICATE NUMBERS	\$5/person		
Saturday Long Ride ONLY visit to Dutton Trout Hatchery PLEASE INDICATE NUMBERS	\$5/person		
Saturday Lunch at Dundurrabin Community Hall for both Short and Long Ride PLEASE INDICATE NUMBERS	\$15/person		
Presentation Dinner, Sawtell RSL PLEASE INDICATE NUMBERS	\$35/person		
Sunday Breakfast PLEASE INDICATE NUMBERS	\$5/person		
Farewell free BBQ, Glenreagh RFS PLEASE INDICATE NUMBERS	\$0		\$0
Motorcycle Raffle Tickets for Royal Enfield Himalayan	\$10		
Raffle Tickets for Saturday dinner tombola	\$1		
		Total	
Special Dietary Requirements:			

Conditions of entry: The motorcycle/s listed above **must** be 30 years or older, currently registered on full or historic vehicle registration or have an approved RMS permit and be in safe working order. The rider must hold a current motorcycle rider's licence. The entrant must ride in a safe manner and adhere to road traffic rules. The entrant must comply with directions of the marshals. We retain the right to refuse an entry.

In the event of a breakdown: The back-up will not wait while you make roadside repairs. Once the back-up vehicle reaches you, just have your bike transported to the next stop where you can attempt a repair if you wish. If you do decline to be transported, *you will be on your own*. You must be a registered entrant to the rally or a member of the Coffs Harbour Motorcycle Restorers' Club to use the back-up trailer with first preference to entrants.

In the event of an accident: Stay together and wait for a marshal, then if unable to help, move on.

Indemnity: I agree to be bound by the rules, regulations and directions of the Coffs Harbour & District Motorcycle Restorers Club Inc. and enter and participate in the rally at my own risk, and to indemnify and keep indemnified and severally the Coffs Harbour & District Motorcycle Restorers Club Inc. and the organizing committee and sponsors from and against any and all liability for personal injury and or damage to property, whether arising out of, or in conjunction with my entering and participating in this rally

Each entrant MUST complete the entry form above in full and sign it.

Entrants signature: _____ Date: _____

Payments

- **Cheques** to be made out to C.H. & D.M.R. Club Inc.
- **Direct Deposit** The account details are: BSB: 533 000 Account Number: 32840323 Make sure that you put your name and the word "Rally" in the Payee advice. (ie: Jo Bloggs Rally)
- Remember to post entry as above to Rally Director or send it via email.
- **Post to** Rally Secretary, P.O. Box 4248, Jetty Post Office, Coffs Harbour, NSW, 2450
- OR
- **Email to** The Rally Secretary rally.coffs.motorcycle.restorers@gmail.com



C.H.& D.M.R. Club use only

Cash	Cheque	Money Order	EFT

Amount received: _____ Receipt No: _____ Amount owing: _____



CLASSIC & ENTHUSIASTS MOTOR CYCLE CLUB of NSW Inc. CENTRAL WEST BRANCH

15th - 16th February 2025 at Lake Canobolas Scout Camp, Orange.

Friday afternoon showed a good size gathering at the Scout Camp with the usual mix of tents and vans being organized and bikes being checked for the rides to commence on Saturday morning. The weather was a bit questionable, but the question was answered about 5.00pm when the skies opened and it poured, sending the campers for shelter. It soon cleared up and by 8.00pm there was a chandelier of stars.

All hands-on deck the next morning to get the entries handed out and welcome the now steady stream of riders arriving, swelling the numbers to well over 100 bikes and there was a good range from the Twenties through to the more recent classes dominated by the ubiquitous Japanese steeds. The Coffs Club was a bit short-handed with only myself and Rob Popplewell in attendance.

There was a choice of long and short rides, both heading down to Blayney for morning tea, then splitting with the long ride doing a loop out to Trunkey Creek before both runs converging on Neville Public School for lunch. The weather was sunny with just a nice crispness in the air to ensure the older engines sounded sweet and tight.



We returned to the Scout Camp via Blaney and Millthorpe for the presentation dinner. A pleasant gathering with good food and camaraderie as a backdrop to the raffles and category presentations. A most enjoyable Rally and well worth the ride down. Congratulations to the organisers.

The Americans



A very original 20's Indian Scout.

A pair of Harley Davidson
"2's", just 20 years apart!



Japanese



One for Nig el

Express Post from Wagga, the class winning
“waterbottle ”!



Europeans



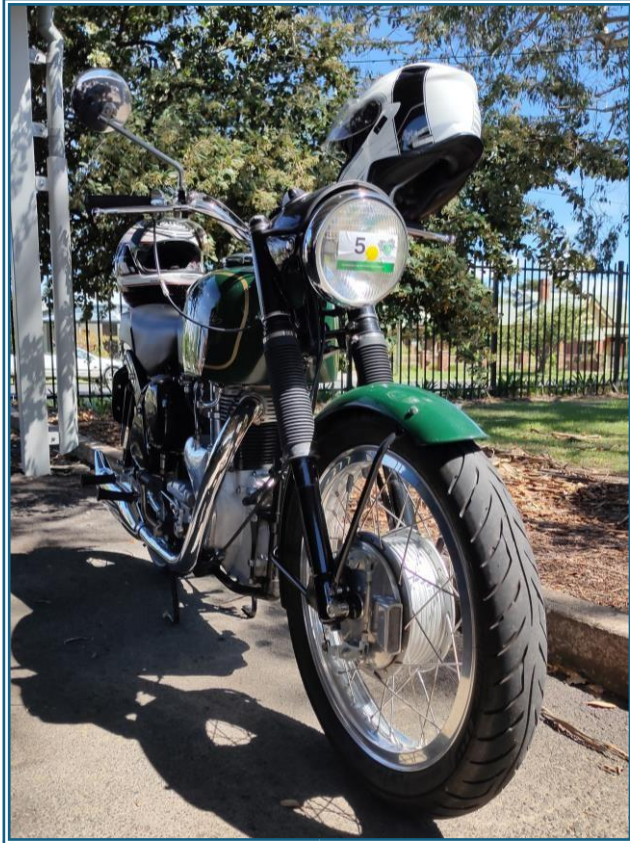
A line up of R90 BMW 's and a nice comfy Californian
from Mandello de I Lario's Guzzi factory.



Best of British



A very tidy 1970 Triumph and the Velocette that won "Bike of the Rally".



Norton at Blayney and the class winning BSA sloper from Wagga





A Lightning and a "B" Series



Class Winning Taree Bike



Ready for the Saturday Ride at the Camp Site

Sidecars: A very fine selection of machines and one of the tightest categories to judge.

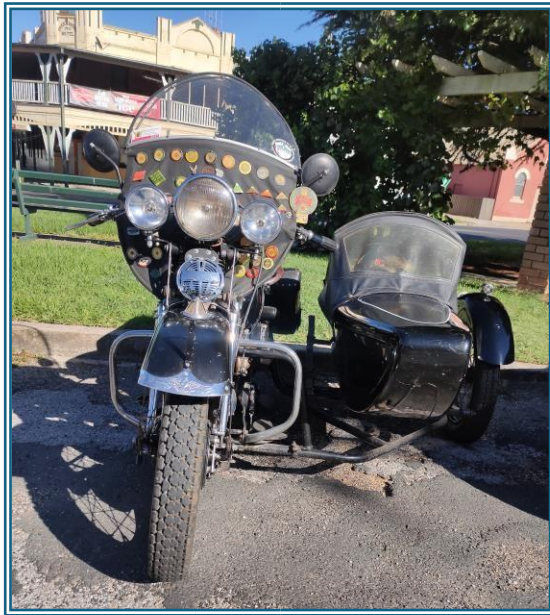


The class winning 1928 Harley Davidson

A speedy performer from South of the Border



BSA with Dusting attached



WL Harley Davidson with Dusting at Molong

Ride Calendar March 2025

Bonville : Opposite Service Station. Shell on Ocean Parade, Park Beach.

All rides are directly to the meeting point. Club bikes do not need a log book entry when following the ride calendar, detours will need a log book entry

The Log book, certificate of approval operations and your club Registration Card must be carried on the vehicle at all times.

Sunday 2 nd	Meet at Shell 9am ride to Coutts Crossing via Coramba Rd, Orara Way and Armidale Rd and return. Short ride and coffee stop Glenreagh.
Tuesday 4 th	Meet at Shell 9am for a ride to Glenreagh Bakery via Coramba Rd and East Bank Rd. Return via Orara Way. From home go to North Beach General Store. Meet from 9.00am onwards for Coffee and a chat then return home.
Wednesday 5 th	Meet at Bonville 9am for a ride to Rose's Café Macksville via Old Pacific Hwy, Wirrimbi Rd and Rodeo Dr, Return via Old Pacific Hwy.
Friday 7 th	Meet at Urunga bus stop 11am for ride to Taylor's Arms. Route to be determined at meeting point.
Sunday 9 th	Meet at Bonville 9am for a ride to Stuart's Point via Old Pacific Hwy, Scott's Head Rd, Grassy Head Rd and return.
Tuesday 11 th	Alternative From home go to North Beach General Store. Meet from 9.00am onwards for Coffee and a chat then return home. Meet at Shell 9am for ride to Coramba via Bucca Rd and Orara Way, return via Orara Way.
Wednesday 12 th	Hidden in the Magazine.
Friday 14 th	Meet at shell 11.00am for a ride to Redrock, route to be determined at the shell.
Sunday 16 th	Meet at Shell 9am for a ride to Lawrence via Coramba Rd, Orara Way, Parker Rd and Lawrence Rd. Return via Orara Way.
Sunday 16 th	Summer Beach Hop at

Tuesday 18 th	Alternative From home go to North Beach General Store. Meet from 9.00am onwards for Coffee and a chat then return home. Meet at Shell 9am for ride to Sandy Beach via Solitary Island Way and return.
Wednesday 19 th	9.00am meet at Bonville for a ride to Nambucca Boat Shed Café Via The Old Pacific Hwy and return.
Thursday 20 th	Grab a meal at the Sawtell RSL and join in later for the General Meeting at 7.00pm.
Sunday 23 rd	Meet at Bonville 9am for a ride to the Taylor's Arms Pub via Old Pacific Hwy to Macksville and onto Taylors Arm Rd and return. Short ride and coffee stop Macksville Elk on 38.
Tuesday 25 th	From home go to North Beach General Store. Meet from 9.00am onwards for Coffee and a chat then return home. Alternative. Meet at Shell 9am for a ride to the Woolgoolga SLSC via Solitary Island Rd and return.
Wednesday 26 th	Meet at Shell 9am for a ride to Glenreagh Bakery via Bucca Rd and Orara Way, Return via Orara Way
Sunday 30 th	Meet at shell 9am for ride to Maclean via Coramba Rd, Orara Way, Parker Rd and Lawrence Rd. Return via Big River Way, Armidale Rd and Orara Way. Short Ride and Coffee Stop Glenreagh General Store.



Ride Calendar April 2025

Bonville : Opposite Service Station. Shell on Ocean Parade, Park Beach.

All rides are directly to the meeting point. Club bikes do not need a log book entry when following the ride calendar, detours will need a log book entry.

The Log book, certificate of approval operations and your club Registration Card must be carried on the vehicle at all times.

Tuesday 1 st	From home go to North Beach General Store. Meet from 9.00am onwards for Coffee and a chat then return home. Meet at Shell 9am for ride to Woolgoolga SLSC via Old Coast Rd and Solitary Island Way and return via Solitary Island Way.
Wednesday 2 nd	Meet at Bonville 9am for ride to Nambucca SLSC via Old Pacific Hwy and return via same route.
Friday 4 th	Meet at Urunga bus stop 11am for ride to Gladstone. Route to be determined at meeting place.
Sunday 6 th Partial Rally Runs.	Meet at shell 9am for a ride to Brushgrove Pub for Lunch. via East Bank Road to the Idle Inn for coffee/(short ride return Orara Way). Then onto Brushgrove pub for lunch via Orara Way and Big River Way. Return via Lawrence Ferry and back to the Grafton and Orara Way.
Tuesday 8 th South North	From home go to North Beach General Store. Meet from 9.00am onwards for Coffee and a chat then return home. Meet at shell 9am for ride to Coramba bakery via Bucca Rd, and Eastbank Rd. Return via Coramba Rd.
Wednesday 9 th	Meet at shell 9am for a ride to Glenreagh Bakery via Bucca Rd and Orara Way. Return via Orara Way.
Friday 11 th	Meet at shell 11am for a ride to Lawrence. Route determined at the Shell.
Sunday 13 th	Meet at Bonville 9am for ride to Nambucca Boatshed Café via Old Pacific Hwy and return via same route.
Tuesday 15 th North South	<i>Meet at shell 9am for ride to Sandy Beach via Solitary Island Way, return via Solitary Island Way.</i>

	From home go to North Beach General Store. Meet from 9.00am onwards for Coffee and a chat then return home.
Wednesday 16 th Partial Rally Runs.	Meet at Bonville 9am for ride to Dorrigo via Old Pacific Hwy and Waterfall Way and return via same route this is the Short Ride or Coffee Stop. After the climb to Dorrigo, it will be onto Fuss Pots at Ebor for lunch and return via the same route
Thursday 17 th	Grab a meal at the Sawtell RSL and join in later for the General Meeting at 7.00pm.
Sunday 20 th Rally Run.	Meet at Shell 9.00am and go North to Bruxner Park and then via Bucca Road and the Orara Valley Way to the Glenreagh Store return via Orara Valley Way.
Tuesday 22 nd	From home go to North Beach General Store. Meet from 9.00am onwards for Coffee and a chat then return home. Meet at shell for ride to Mullaway store via Solitary Island Way and return via same route.
Wednesday 23 rd	Meet at Bonville 9am for ride to The Boardwalk Café at Urunga via Old Pacific Hwy and Yellow Rock Road. Return via Old Pacific Hwy.
Sunday 27 th Partial Rally Run	9.00am meet at shell and follow the “Old Pacific Highway” to Raleigh before turning off to Bellingen and to Dorrigo for brunch. Those who would like a longer ride (Rally Ride) do the loop of Tyringham Road, Armidale Road, Waterfall Way and Pine Creek Way to return home, stopping again in Dorrigo for refreshments.
Tuesday 29 th Partial Rally Run.	From home go to North Beach General Store. Meet from 9.00am onwards for Coffee and a chat then return home or after morning tea, at approximately 11.00am, there will be a practice Rally ride to Macksville via Giinigay Way then onto Scotts Head for lunch at the Scotts Head Bowling Club and return via the same route.
Wednesday 30 th	Meet at Shell 9am for ride to Glenreagh Bakery via Coramba Rd and Orara Way and return via same route.

Up and Coming Events 2025

- 15th March Malaney Swap Meet.
- 16th March. Summer Beach Hop at the Jetty. See Flier.
- 29th – 31st March Dubbo Rally.
- 4th- 6th April. Inverell Rally. See Flier. Entries close 21st March.
- 13th – 20th April. 50th Easter Bathurst Tour. The Vintage Motorcycle Club of Australia N.S.W, Bathurst Rally.
- Sunday 13th April. Coffs Coast Sport & Leisure Motor Festival at the Coffs Harbour Showgrounds
- 2nd – 4th May. Singleton Rally. See Flier.
- 23rd – 25th May. Coffs Harbour & District Motorcycle Restorers Club Rally. See Flier.
- 24th – 25th May Bellingen Show.
- Lockyer Valley Rally at the Laidley Showground 1st – 3rd August
- 8th – 10th August Triples Rally at Woolli.
- 15th– 17th August. Clarence Valley Historic and Enthusiasts MCC Annual Rally Grafton Showgrounds.
- Laidley Swap. Friday setup 17th October and public on Saturday 18th October.
- 31st Oct – 8th November. Vintage Motorcycle Club, V.M.C.C. 70th Anniversary Rally. Based in Bathurst.



Minutes of Meeting 16 January 2025

Meeting Opened: 7.11 pm

Visitors: Garry O'Dell



Apologies: Chris Pearson; Graeme Wright; Fran & Bryan Short; Craig Melrose; Mark Herfoss; Sean Condon; Allan Turner; Ashley Beaton; Dan Gibson; Peter Watson; Brendon Drum; Peter Gailey, Mark Merritt; Jenni Balenzano; John Moore

Previous Minutes:

Minutes of meeting held on 19 December 2024, have been distributed.

Moved: Nick Hiller

Seconded: Gary McKay

Accounts for Payments:

CHMC Affiliation Fees \$165

Raffle Bike \$4,000

Treasurers Report: attached

Moved: Glenn O'Grady

– Seconded – Ian Corner

Correspondence In:

Newsletters

Correspondence Out:

Email to Club Sponsors/Advertisers

Captains Report:

All rides are going well, weather a bit hot, having two Tuesday runs is good, most attendees are pretty happy with the rides.

Rides are very well attended considering the weather we have had, Tuesday, Wednesday and Sunday. almost everyone has a get wet story. Tuesday northern rides are being well attended. North Beach still well attended with 23 club registered bikes attending.

Do you need to fill out your logbook? Refer to RMS and see what you need to know. Responsibility lies with the person riding the motorcycle, if in doubt, fill the book out. There is an allowance of 60 days riding.

If any members have any suggestions for the midweek rides, please contact Gary and give him some input.

Membership - Eddie Oremek

New member applications:

Garry O'Dell – New application received from Garry. Moved to area about 3 years ago, Kawasaki 900 1976 model. Has a tank to strip the plastic liner out of and is looking for some guidance, anyone with knowledge of this, please reach out to Garry, all fingers pointed at Gav Gill.

5 Applications where application fees have been paid but no further progress has been made on the applicant continuing the process.

- **Vince** – Club has voted to induct Vince as a member.
- **Jake** – Club has voted to accept Jake as a member.

Business Arising from Previous Minutes:

Website – Che – guest of Mark Herfoss has the ability to see if they can assist with the new website, has a few trainees who could work on it to see if we can achieve what we are after. Details provided to Che on what the club requires, the ability to be mobile friendly, easy to access, a members section as well as what we currently have. We still are waiting on progress on this.

Rally Bike – A Rally bike has been purchased, a 2020 Royal Enfield Himalayan. Thanks to Glenn O'Grady and Pete Watson for the negotiation and collection of the bike. Raffle tickets have been ordered, once picked up, members will be asked to collect a book to sell. Please let me know if you are happy to assist.

Club Newsletter – Trisha has attended to the query from a club member in relation to advertisers in our Club Newsletter. Email has been sent to all sponsors listed in the Club magazine thanking them for their support in the past, the results of our rally last year and asking if they wish to continue with sponsorship. Very few have responded. If there has been no further response in a week, each sponsor will get another phone call to ask if they wish to continue sponsoring or advertising.

If no further response is received, Lara will be notified and they will be removed from the magazine.

Sawtell RSL Club Grant – We have been granted an amount of \$2,000 which has been deposited to our club account. These funds have been put toward the purchase of the Raffle Bike.

General Business:

Glenn O'Grady – Rally Bike donation – research has been done by Glenn this year. We would like to donate to more local underfunded charities. We have a list of potential charities, most were well funded, some were not. As a shortlist – we would like to make our main donations this year to **Pete's Place** and **Cando Cancer Trust**. We will arrange a spokesperson from each charity to come along and attend a meeting to tell us about what they do, how they do it and how they will benefit from our donation.

Peter Watson has asked we raise with the members to donate to a further two charities. We have also discussed the option to donate to the **Nana Glen Community Response Team**, they have a vehicle donated by state government, if there is an emergency in the area, they are the first point of call, they respond doing defib, emergency first aid, and do this until the ambulance service attends. They are partially funded by the State Government Ambulance Service, they are after an AED (defib) which is \$525.00 for training purposes. The reason for the request, is the main AED is located in the truck and can't be left in the training centre.

The second charity would be the **Boambee East Community Centre**, a not for profit organisation who run an after school arts program ASAP - where kids aged from 6 to 13 years of age attend the centre on a weekly basis. They are in need of art supplies, it is proposed to donate an amount of \$500 to this service on behalf of our club.

We propose to donate a total of \$1025 to these two organisations from General Club funds, to be more involved in the community.

Glenn moved that we donate \$1025 to the two nominated causes out of our Club account effective now, accepted .

Rob visited Mick Carpenter at Baringa, he is in good spirits and doing his rehab and physio. Una still has the cage on her leg but is hopeful it will be removed by the end of the month. Mick would enjoy a visit from Club Members, if you are in the area, call in and see Mick at Baringa, his temporary home for another month or so. He is in Room 14,

but check with staff at Baringa prior to heading in, as he is doing two sessions of physio a day and some rehab. Rest hours are between 1pm and 3pm, so any other time outside those hours are okay.

Terry Ryan lost a leg in an accident prior to Christmas. Rob took Terry out for a day and then took him back to the hospital after the day out. He is doing well and has a good attitude. He has no recollection of what has happened at all from the accident. Terry is a member of the Grafton club, it is thought that he was unloading bike, and was not found for some time, hence he lost his leg due to the injury. Terry is in the Rehab section of Coffs hospital, anyone who knows Terry, encouraged to call in for a visit.

Club Library – Chris Pearson queried whether the club was selling the club library – a few books were sold at the Rally, one book on cars was donated to a club in Illawarra – but we still have the majority of the library, kept by Eddie in safe keeping.

Rob – Tassie Tour – expressions of interest needed to be in last Saturday, 120 spots filled in three minutes. It seems Nick, Rob and Jack have insider knowledge and happened to get spots, good on them!

Rally – Entry is done, will be sent out by the end of the month. If you are happy to help, see Gary for marshalling.

Member Spotlight – Nil

Bucket Draw – Drawn by Matt Carmadi – drew 7 Clubs – received \$10

Second draw – Drawn by Ian Corner – drew 5 spades – received \$10

Third Draw – Drawn by Ian Corner – drew 4 hearts – received \$10

The jackpot continues to grow to the next meeting – there are only 19 cards left – come along next month to win the jackpot!

Rally Friday 23, Saturday 24 and Sunday 25th May 2025

Arrangements for the Rally are being finalised. The rides planned look like great rides, club members are encouraged to enter the rally, there is a trophy for the best club bike, but you need to be entered to be eligible.

If you are unable to enter the rally, but still wish to assist with marshalling, please contact Gary and he will compile a list. We will need roughly 10 marshals for each ride, lunches and morning teas will be provided to marshals during the rides.

Meeting Closed: 8:00

Next Meeting: Thursday 20 February 2025

Raffle Bike:

Minutes of Meeting 20 February 2025

Meeting Opened: 7:08 pm



Visitors: Nil

Apologies: Chris Pearson; Sean Condon; Allan Turner; Gary McKay; Jenni Balenzano

Previous Minutes:

Minutes of meeting held on 16th January 2025, have been distributed.

Moved: Rob Popplewell Seconded: Ian Craig

Accounts for Payments:

Mid Coast Printing – Rally Raffle Tickets - \$181.50

Australia Post – Post Office Box - \$164.00

Treasurers Report: As per Attached Report

Moved: Glenn O’Grady – Seconded – Brendan Drum

Correspondence In:

Various Newsletters & Rally Entry Forms

Correspondence Out:

Nil

Captains Report:

Everything is going well, rides well attended, good weather, good times. Mullaway ride was a good outing, next Sunday to Scotts Head or Macksville, as many bikes don’t go past there. There are a lot more Japanese motorcycles attending, rather than the British, but still good attended.

Membership - Eddie Oremek

New member applications:

Andy Wagstaff – A previous member, re-joining, has always had Hondas

Business Arising from Previous Minutes:

Website – Che – has provided us with a proposal for a new website build. Generously, Che has offered to build the website for free, we will have ongoing costs of web-hosting and email accounts. The proposal was presented to the meeting with Club members unanimously voting in favour of the website build to proceed. Confirmation has been sent to Che to proceed and start work. Once further information has been received, we will ask members for content to put up on the website.

Moved Craig Melrose – **Seconded** Mark Herfoss

Che Diggins – offer Che a membership to our Club for his support and generous donation – **Moved** Glenn O’Grady – **Seconded** Brendan Drum

Rally Bike – Raffle tickets available to sell. Peter Watson and Brendan Drum attended the Alstonville Swap meet where a couple of books of tickets were sold. If any member would like some books to sell, please let either Gary McKay or Trisha know and we can arrange to have some books provided to you.

General Business:

Rob Popplewell – Ned O’Brien is up and walking around, if anyone wants to drop in to say hello, feel free. He is doing well, turning 96 this month.

Rob and Nick went to the Orange Country Bike Rally, a good ride, Nick had a bit of trouble with a fractured bracket, locals sorted it out and got him going again.

The concourse trophy was brought along by Rob Popplewell, Ennio has won it. Peter Watson will drop it off for him.

Member Spotlight – Nil

Bucket Draw – Drawn by Alex Donnelly Drew 5 Hearts – received \$10

Second draw – Drawn by John Moore - Jack of Hearts – received \$10

Third Draw – Drawn by Peter Martiin – Jack of Diamonds – received \$10

The jackpot continues to grow to the next meeting – there are only 16 cards left – come along next month to win the jackpot!

Rally Friday 23, Saturday 24 and Sunday 25th May 2025

Arrangements for the Rally are being finalised. The rides planned look like great rides, club members are encouraged to enter the rally, there is a trophy for the best club bike, but you need to be entered to be eligible.

If you are unable to enter the rally, but still wish to assist with marshalling, please contact Gary and he will compile a list. We will need roughly 10 marshals for each ride, lunches and morning teas will be provided to marshals during the rides.

Meeting Closed: 7:44pm

Next Meeting: Thursday 20 March 2025

Raffle Bike:



The Market Place

Yamaha SRX600 1985 Café Racer (The Throbbotron)

85,000 km

\$5,500

1JK engine

I've had this delightful motorbike since 2011, (71,000 km). Since then, it has been substantially re-built to be a solid, reliable and tidy machine. It is not a concours bike – my objective has been to make it mechanically robust without doing the total frame strip-down and paint journey. It is, however, a beautiful machine. It is registered as a NSW historic vehicle.

Kick-start only (auto decompression system)

Top-end rebuild by previous owner ~ 65,000 km (Serco piston, Tighe cam)

My work:

All new engine bearings except main (which was well within spec)

All new engine seals

All new clutch plates.

Stainless steel Allen screw engine kit

Replaced 5th and 2nd gears (from used XT550)

All new cables (except de-compression)

New chain & sprockets

Fork stanchions hard-chromed and forks rebuilt with Hagon progressive springs

K&N air filter (Inside std airbox)

Carburettors rebuilt (seals, float, float valve and seat, choke plunger)

New Petcock, fuel lines and breather tubes

Single seat re-cover

Re-seated valves and replaced valve seals

HEL braided brake lines, Master cylinder kit

Rear wheel dampers

New Metalgear rear disk & rear caliper seals and pads.

Tyres Metzler Lazertech - 2500 km of wear

Koni Shocks

To arrange for an inspection and test ride, call or text Geoff Borschmann on 0412 777 806.

Geoff has recently undergone ankle surgery and is about to have a knee replaced, so kick starting a big banger is off the menu





BMW F800GS 2009

65,000Kms

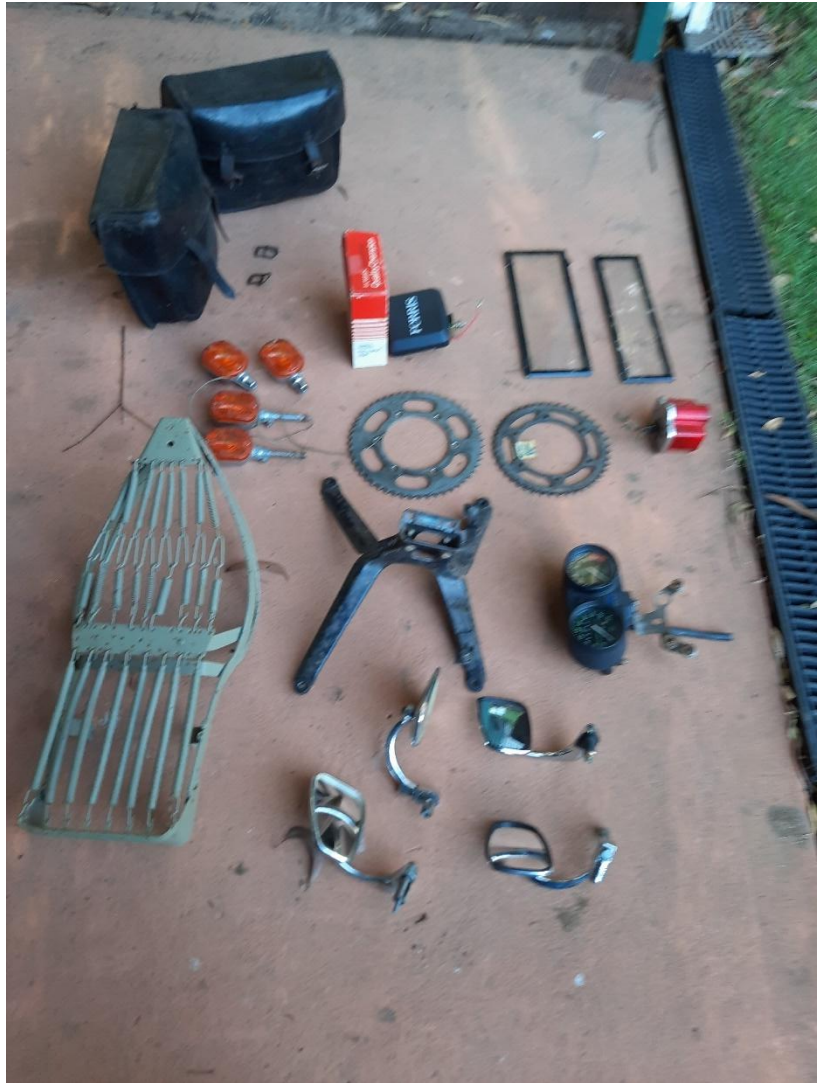
Spare set of Off-road Wheels
Complete Racks and Bags.

\$7000

Please Phone Kevin for more
details 0414928158



Bar end mirrors - \$10 ea.
 Seat frame came of a R26
 BMW but not genuine BMW -
 \$25.
 K100RT fairing spider bracket
 - \$50.
 R100 Speedo/tacho - \$500.
 Tail light unit(probably from
 60's,70's Honda) - \$20.
 Sprockets from 1980's XL250
 Honda - 51t & 44t -\$5ea.
 Blinker set - \$5.
 Leather saddle bags - \$50.
 Ferris Fog/Spot light - \$20.
 Rego plate clear covers \$5ea.
 Most negotiable.
 Rob Popplewell - 0402825924



Suzuki GSX 1100 ESD 1983

\$13,000

Complete rebuild including 1135
 Wiseco kit. All engine and chassis
 bearings replaced. New fork bushes.
 New brake discs and braided lines and
 numerous other news parts. Never
 crashed. Paintwork
 etc 10/10.

Dan Gibson



1952 G9 Matchless in its original black paint is a true classic.

With just **20k original miles**, this bike has been lovingly maintained and is registered on historic rego.



Highlights include:

- Completely original with full history and paperwork
- Recent maintenance: fully rewound magneto & new battery
- Starts on the first kick, offering that signature twin-cylinder sound
- Paired with a **period-matched Tilbrook sidecar**, perfect for weekend rides or as a vintage display

Whether you want a beautiful collector's piece or a timeless ride for sunny weekends, this Matchless with sidecar is perfect. Don't miss out on this unique gem!



Contact Ray for more details or to arrange a viewing, PH 0432 436 616

Price \$19,800 ONO





***These next five bikes are owned
by our member Shane Barns.***

***Please contact Shane for any questions or
more photos.***

Ph. 0401 769 314



**Norton model no.50
1963 350cc single.**

**Needs little work to
finish restoration.**

\$12.500



Triumph 1951 Tiger.

**Privateer race kit.
Was on club
registration, good
condition \$14.500**



**Triumph 1959
Thunderbird. Old
restoration. Motor
fully rebuilt. On club
registration. Good
condition. \$15.000**



**Triumph 1946 Tiger.
Old restoration.
Was on club
registration. Good
condition. \$14.000**



**Old Mac Velo TT Race
Bike. Raced in NSW
early 1960's. Has race
history. \$6.500**





Sponsors

Remember our sponsors support us and provide welcome donations which make our Club Rally a success, so let us support them!

When using their services let them know you are a member, and you may even get a discount?

Don't forget to mention how much we appreciate their sponsorship.





Everything Pools, Foam & Rubber



Wednesday 12th March. Meet at Shell 9am for a ride to Ulong via Coramba Rd and East Dorriggo Way and return.



Coffs Harbour Bearing Centre
Cost effective solutions for the Australian farm!

A vibrant summer-themed graphic featuring a red and yellow beach umbrella, green palm fronds, white and yellow plumeria flowers, two colorful starfish (yellow and blue), and a red and white striped beach ball. The background is a light blue sky with white clouds and seagulls. The text 'SUMMER BEACH HOP' is written in large, bold, yellow letters with a blue outline, set against a dark brown wooden plank background.

SUMMER BEACH HOP

MARCH 15, 16 2025

CLASSIC CARS **JUNIOR ELVIS** **RETRO DRESS UP**
LIVE MUSIC **COMP**
DANCING & DANCE DISPLAYS

If you own a pre 1985 car, ute, van, small truck , bike or caravan, we'd love to hear from you.

Enquiries 02 66 528266, or email john.logan@jlent.com.au

www.summerbeachhop.com.au



Inverell Motorcycle Restorers Club Inc. 30th ANNUAL RALLY ITINERARY



We invite you to attend our 30th Annual Rally (4, 5, 6 APRIL 2025)
Another great event for fellow historic motorcycle enthusiasts and visitors.

#Pre-rally - Wed Apr 2nd Join IMCRC club members on a local ride and a pub lunch stop (at own cost). Meet at Inverell Tourist Centre carpark at 10:30am for 11:00am departure. Indicate interest on entry form.

#Pre-rally Thurs Apr 3rd Short mystery ride with club members followed by BBQ lunch (supplied) at Lake Inverell. Meet at Inverell Tourist Centre carpark at 10:00am for a 10:30am departure. Indicate interest on entry form.

VENUE: The Inverell Pioneer Village, Bundarra Road is muster point/check-in for the weekend.

Friday 4th April: Registration, Ride and Lunch. Discount entry to National Transport Museum

Inverell Pioneer Village, Bundarra Rd - Register upon arrival, receive your entry pack. Tea/coffee available. All bikes welcome - judging for *pre 1960 bikes*.

***Ride Details:** Depart Pioneer Village at 11am for a ride taking us via Little Plain & Mt Russell, stopping at Oakwood to view a large collection of vintage tractors and other machinery. Enjoy a low and slow cooked lunch on site then return to Inverell (lunch ticket required). **Total ride distance 60 km approx**

National Transport Museum 5:00 – 7:30pm. Half Price (\$10) entry to explore the 80+ motorcycles, 120 other vehicles and static displays. Present discount voucher at the door to claim discount. We will show a movie about the legend John Surtees (start time 6.00pm approx.). Food and soft drink available to purchase.

#Saturday 5th April: Refreshments, Judging, Choice of Ride and Lunch, Presentation Dinner

- Muster at the Pioneer Village: gates open 7:30am. Food vans onsite. Some refreshments, tea/coffee provided. Bikes will be marshalled into the relevant judging category line up and must be ridden to the site.
- Judging commences 9:00 am

***Ride Details:** Inverell-Bingara-Gravesend-Warialda(lunch)-Inverell

*Choice of either **Long Ride** or **Short Ride**.*

- **Long Ride** will depart 10:30 sharp heading west along the Warialda Rd to Delungra, then south to Bingara. Short stop at northern entry to Bingara just out of town. Ride continues south, through Bingara & northward to Gravesend (via Elcombe Road) then right (east) to Warialda for lunch - *lunch ticket required*. (140km approx). Fuel available Delungra, Bingara & Warialda
- **Short Ride** leaves at 11am and follows the same route to Bingara where riders turn right (north) to Warialda for lunch - *lunch ticket required*. (100km approx)
- Following lunch all riders will head east to Inverell (65 km approx).

Total ride distances:- 205km (long ride) 165km (short ride)

***Presentation Dinner:** 6:30 for 7:00pm, Inverell Sporties, Glen Innes Rd Inverell. Meal(s) purchased with your entry form. 2 course meal, bar facilities, raffles, presentation of rally awards & trophies. *Sporties Courtesy Bus is available - phone 02 6722 1545 to arrange pick-up.*

#Sunday 6th April: Tea/Coffee, Short ride and farewell

***Ride Details:** Option to accompany IMCRC members on their regular Sunday ride. **Total Ride Distance 35km approx**

NOTES

- Prior booking & check-in on arrival for camping at Inverell Pioneer Village is essential – **0477 217 179**
- Rides are marshalled & accompanied by a back-up vehicle (Rally entry sticker pick-up only).
- Backup vehicle will not wait for roadside repairs - bike to be loaded immediately.
- Owner/rider is responsible for securing their bike on the backup vehicle.
- Bikes are eligible for judging only if they are ridden to the Saturday marshalling area and then to the designated Saturday lunch stop (mechanical reliability is part of the judging criteria).
- Saturday Ride mini-bus - FREE for any Motorcycle Club Member entrant, partner or family member, add passenger name to entry form. *Limited seats. Vacant bus seats may be offered on the day.*
- Friday & Saturday lunch is by pre-purchased ticket which must be presented at the venue.

We look forward to seeing you in April 2025. Ride Safe – Arrive Safe.

ENTRIES CLOSE: Thursday 21st MARCH 2025

Late entries cannot be guaranteed meals or badges

INVERELL MOTORCYCLE RESTORERS CLUB INC.
ENTRY FORM for 30th Annual Rally - 4, 5, 6 April 2025
(One form per entrant – make a copy if needed)

Entrant Name:

Enquiries: Garry 0431 190 964 or Peter 0410 544 419

Postal Address:

P/Code:

State:

Contact e-mail:

Contact Phone:

Make	Model	Year	CC	Reg No.	Side Car?

Condition of Entry: Machines must be ridden to Saturday judging point to be eligible for judging

Are you a member of a motorcycle club? Club name:	Cost \$	Number Required	Total Cost
Entry Fee (<i>refreshments+1xbadge</i>)	35.00	n/a	35.00
Friday Lunch (per person)	25.00		
Saturday Lunch (per person)	25.00		
Saturday Presentation Dinner (per person)	35.00		
Extra Badges (cost per badge)	8.00		
Raffle Tickets (cost per ticket)	1.00		
TOTAL PAID			\$
EFT/Direct Deposit: BSB 062556 A/c No. 00907109 REF: <i>Your Name</i> Cheques payable to: Inverell Motorcycle Restorers Club Inc			

SATURDAY Mini Bus reservation.
Enter passenger name below:

Pre-rally days – Wed Apr 2nd, Thurs Apr 3rd - Indicate interest / numbers

	Interested Yes or No?	Numbers for catering
Wed - Ride along with IMCRC members and pub lunch (own cost)		
Thurs - Mystery ride and BBQ lunch (supplied) at Lake Inverell		

Email entries to: inverell.mcrc@gmail.com **please confirm that EFT or DD payment has been made in the box below**

Post entries to: IMCRC Inc. 2025 Rally - P.O. Box 324 Inverell NSW 2360

INDEMNITY STATEMENT: In consideration of acceptance of my entry & participation I agree that

- 1) I enter and participate in the IMCRC Inc. Rally at my own risk;
- 2) I be bound by all rules, regulations & directions of the IMCRC Inc. organizing committee;
- 3) I not hold the IMCRC Inc. committee, or any of its sponsors or representatives responsible for any damage, loss or theft of possessions or bodily injuries sustained during the course of the rally;
- 4) my nominated motorcycle is registered and I am fully licensed to ride;
- 5) I will be responsible for securing my bike on the back up vehicle if breakdown occurs.

Signature

Date

EFT/DD PAYMENT MADE (Y/N)

☐

THE IMCRC RESERVES THE RIGHT TO REFUSE ANY ENTRANT



29th ANNUAL HEART OF THE HUNTER RALLY
Friday 2nd Saturday 3rd & Sunday 4th May 2025
SINGLETON SHOWGROUND, BATHURST STREET, SINGLETON

www.Singletonclassicmotorcycleclub.com

Facebook: Singleton Classic motorcycle club

singletonclassicmcc@gmail.com

Closing Date for Entries: 27 April 2025, **no refund if cancelled after that date**

NAME: [Please Print] Phone No:

ADDRESS/Email Address..... Post Code:

CLUB NAME.....

Motorcycle Make & Model 1: Year.....

Motorcycle Make & Model 2: Year.....

F E E S & C H A R G E S

Entry Fee per Bike	\$35 per entrant INCLUDES ONE BADGE & LUNCH	[1]	\$ 35
Extra Saturday lunches (Roast beef and gravy rolls)	\$5.00 each	[]	\$
Saturday Presentation Dinner	\$36.00	[]	\$
Sunday - Breakfast	\$5.00	[]	\$
Raffle tickets	\$2.00 each or 3 for \$5.00	[]	\$

NO MONEY, NO ENTRY REGISTERED T O T A L

INDEMNITY STATEMENT: I, the entrant, agree not to hold the Singleton Classic Motorcycle Club Inc, or its members or sponsors, responsible for any loss or damage of machinery and/or bodily injury sustained during the course of the Rally.

Entrant's Signature..... Date.....

Please tick payment method

☐ Bank transfer: BSB – 650 000
ACC - 530154218

please put full name on transfer details

☐ Please make cheques payable to: 'Singleton Classic Motorcycle Club Inc'

Return Entry Forms to: The Rally Secretary, PO Box 255, SINGLETON 2330 - Ph. 0422072901 -

singletonclassicmcc@gmail.com



**SINGLETON CLASSIC MOTORCYCLE CLUB INC.
“ANNUAL ‘HEART OF THE HUNTER’ RALLY”**

The Singleton Classic Motorcycle Club will be holding our annual Heart of the Hunter rally on the 1st weekend in May. The rally will begin at the Singleton Showground, 32 Bathurst Street Singleton with camping available at the showground if needed phone (02) 6572 2039 for booking

Raffle prizes

1st Prize – 2014 Honda cub

2nd Prize- Box Glenguin Estate wine

3rd Prize- Ace Tyres Wheel rotation & alignment

Friday 2nd – Leaves 12:00pm

A nice short run from the Singleton Showground to a nearby pub for lunch. This ride is unmarshalled and designed to be ridden at the speed limit but will be able to cater for slower bikes.

Saturday 3rd Long ride – Leaves 9:30am

This ride will leave Singleton Showground and will be around the 200km mark with a fuel stop near the halfway mark. This ride is for bikes that can travel at the set speed limits on the route, directed by the first rider and with multiple riders marshalling the corners along the way. A backup trailer is provided.

Saturday 3rd Short ride – Leaves 10:00am

This is the slower ride, for vintage and veteran bikes or riders that want to take it steady. This ride leaves the Singleton Showground, being around 120km, with a stop for a coffee and the possibility to fuel up. Once again, this ride will be led by the first rider and marshalled along the way to keep the route accessible for everyone. The backup trailer will also be provided.

Lunch: Both rides will meet back at the showground for roast beef and gravy rolls for lunch.

Dinner: Please note: Dinner, trivia and raffle draw at Singleton Bowling Club (50 Pitt Street, Singleton) for all rally entrants, a 6:00pm start for a 6:30pm dinner.

Sunday 4th – Leaves: 9:30am

A nice slow ride with morning tea and back to the showground, with lead rider and corner marshals. Backup trailer is once again be provided.

For the safety of all involved, if you're feeling unwell, please stay at home.

Thank you for understanding.